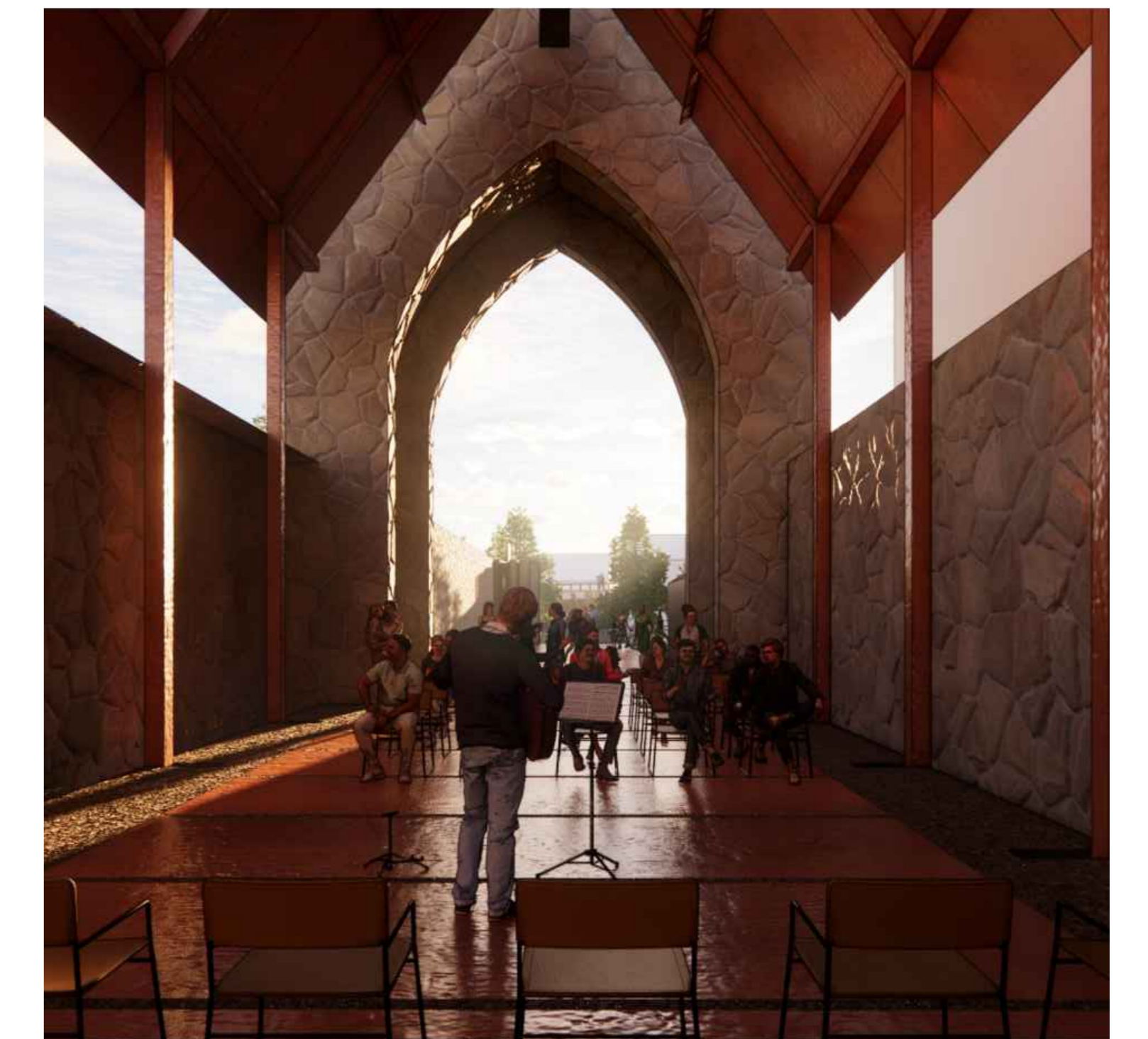


VIEW FROM SOUTH-EAST



VIEW FROM WEST



INTERIOR VIEW

Copyright of Turley and Arrow Architects AEP
This drawing is the intellectual property of Turley and Arrow Architects AEP. It is not to be used, copied, or reproduced in any form without the written permission of Turley and Arrow Architects AEP. All rights reserved.

1. corten weathering steel plate 20x200mm
2. corten weathering steel beam 20x200mm
3. corten weathering steel canopy plate
4. corten weathering steel vertical support beam 20x200mm
5. corten weathering steel ridge beam
6. woodwork building to engineer specifications
7. light projector, enclosed in the pavement, fixed up on the base of each pillar/beam
8. wooden planks to fill the pavilion roof perforations, dimensions: 200mm x 50mm diameter
9. metal plate, 500mm x 500mm wide
10. natural stone through plate 30mm wide
11. natural stone slabs, set to pavements
12. corten steel mesh 20mm thickness
13. gravel, light brown color, 10-15mm diameter
14. light iron
15. wooden planks 20x200mm, length 1500mm
16. wooden substructure, dimensions according to CL
17. wood circular pillars 200mm diameter
18. raised stone walls engineer specifications
19. corten weathering steel plate, 300mm wide enclosed in pavement making the rest of the old stone wall
20. metal grid 100x100mm, fixed up around each tree trunk and base of each wall
21. included road finishing 1% towards the drain slot
22. corten weathering steel plates enclosed in the ground
23. corten steel mesh 20mm
24. corten weathering steel handrail 5mm thickness
25. corten steel mesh hand
26. step 150mm height
27. corten steel handrail
28. corten steel Abbey information sign
29. corten access gate door
30. Glass panel / glass PVDF panel

- Existing historic structures to be retained (in section and elevation)
- Existing historic structures to be retained (in plan)
- Existing Walls
- Natural stone slabs & setts to pavements
- Corten
- Proposed Trees

CLIENT
Louth County Council

PROJECT
Westgate 2040, Drogheda

DRAWING
Abbey Proposed Plans, Elevations Sections A-A and B-B

PROJECT NUMBER
LOU9304

COORDINATOR NUMBER
LOUK005-P-000-111-A

REVISION
N/A

DATE
28.08.2023

SCALE
1:100 @ A2

ADDRESS
Abbey Farm Farmingdale 13, Drogheda, Co. DU, Ireland
1304 Copenhagen K

Turley
851 KCP

